

Villa Resort Kbely

Dům 16

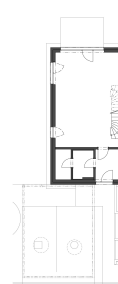
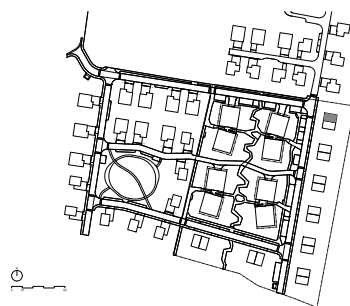
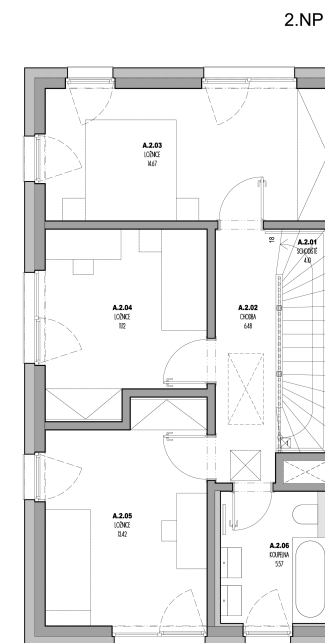
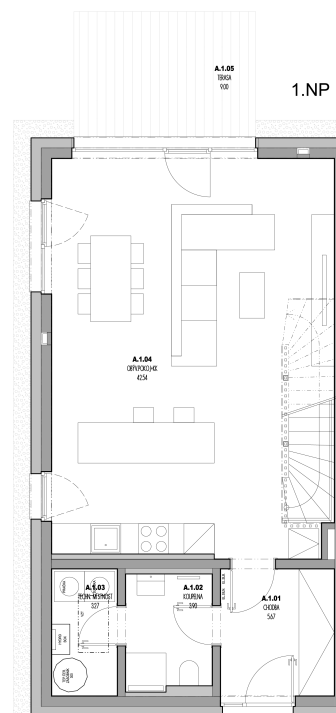
4+kk

Podlahová plocha 116 m²

Užitná plocha 109 m²

Pozemek 509 m²

		plocha (m2)
1.01	Chodba	5,67
1.02	Koupelna	3,90
1.03	Techn. místnost	3,27
1.04	Obýv. pokoj + KK	42,54
1.05	Terasa	9,00
2.01	Schodiště	4,10
2.02	Chodba	6,48
2.03	Ložnice	14,67
2.04	Ložnice	11,12
2.05	Ložnice	13,42
2.06	Koupelna	5,57



EBM